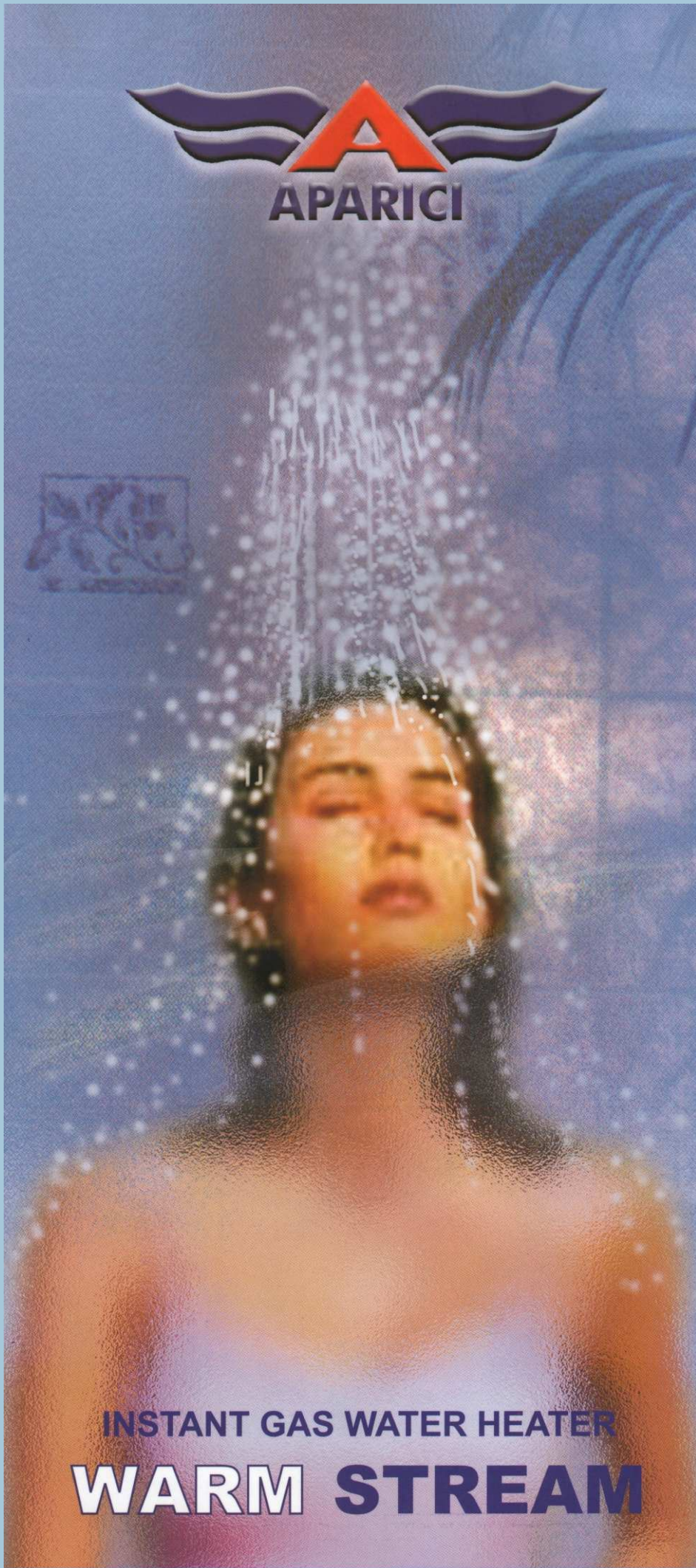




APARICI



INSTANT GAS WATER HEATER

WARM STREAM



In 1974, when promoters decided to set up the company for manufacturing various types of water Heaters, with a dream of becoming the market leader in the field, a company christened **“WARM STREAM”**, which meant- the gentle, smoothing flow of warm water from its products to manufactured was formed.

Within 25 years, company’s dream came true. Today, **WARM STREAM** is well known brand across the nation, and is a market leader in the non conventional water heater market.

Company’s wood Fired Water Heater has penetrated the length and breadth of the country, because of its economy, simplicity, ease of operation, working on low cost fuel, longer life, reasonable price coupled with nationwide sales network, and best after sales services. Today, **WARM STREAM** Wood fired Water Heaters have become most favoured and cost effective water heating devices across the country.

At later stage, company added **“SOORYAJI”** Solar Water Heaters. Today, **WARM STREAM** is leader in this segment also. These are non-conventional, non-polluting Water Heaters, working on freely available solar energy, saving heating cost for the user and costly fossil fuels for the country.

With improvement in the availability of clean and efficient fuels in the form of natural gas and bottled gas, **WARM STREAM** decided to offer Gas Fired Water Heaters to their customer in early 80s. Since then **WARM STREAM** is having large numbers of highly satisfied customers for fully automatic gas fired water heaters.

With liberalization of Indian economy and with improvement in affluence in the society, consumer taste, style of living, daily need has undergone a sea change. The company responded by offering fully automatic instant Gas fired Water Heaters, by joining hands with **Simex of Spain**. Now **WARM STREAM** is bringing to your door steps, the most modern, highly efficient, compact, safe and friendly instant Gas Fired Water Heater called **“APARICI”**.



IG 10/11 SA

- **Energy-saving** : No pilot flame represents an 8% saving on energy compared to other models. It has a safety system by ionisation.
- **No cord** : Easy to install. 1.5V battery.
- **Adjustable power** : Can be adjusted from 40% to 100% with flow regulator.
- version for outdoors installation: IG 10/11 SEA

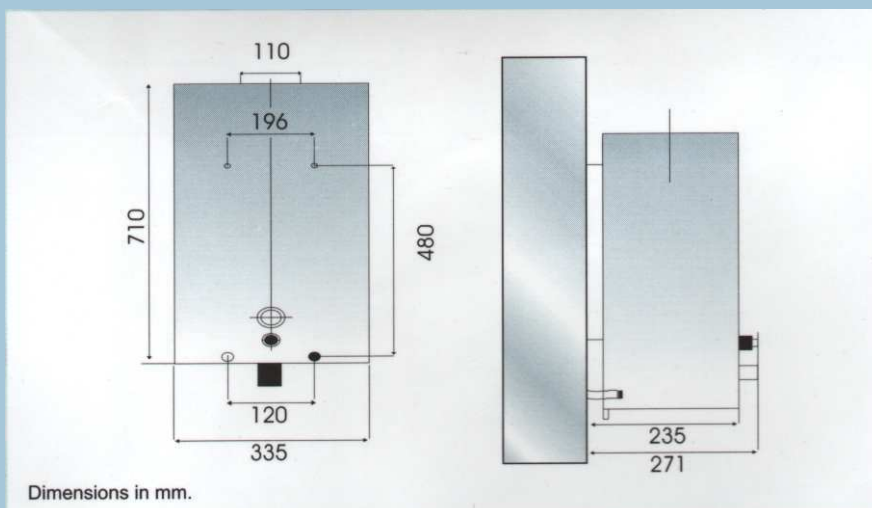


IG 10 T

- **Thermostatic system** : Temperature selector for output water by means of thermostat control. The temperature selected is maintained regardless of the temperature of the input water and water flow.
- **Ignition** : piezoelectric system.

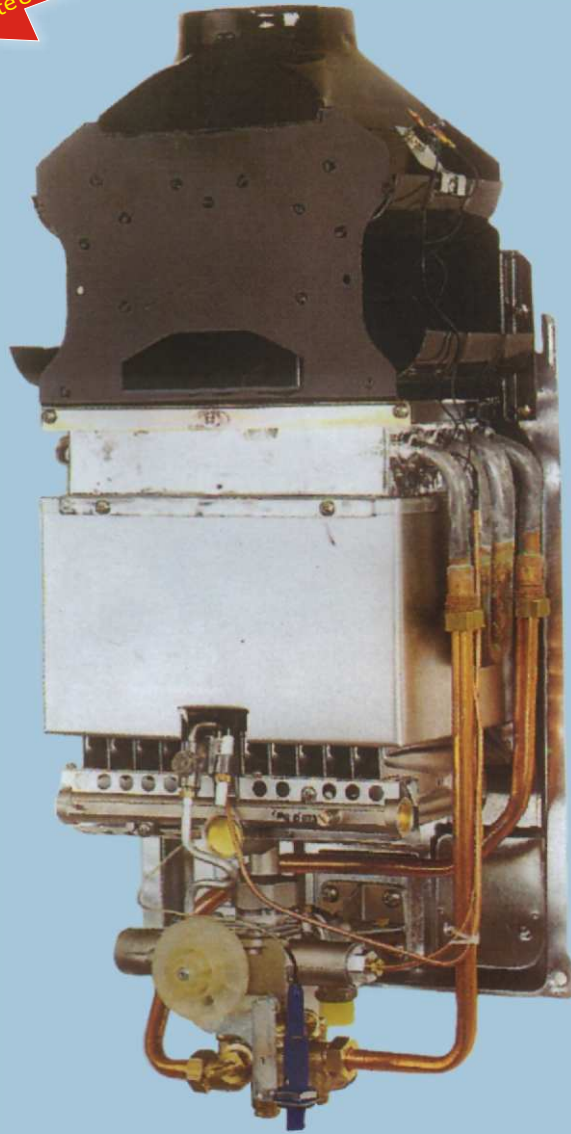


- **Ignition** : piezoelectric system.
- **Power selector** : Proportional adjustment from 40% to 100%
- **Temperature selector**
- version for outdoors installation : IG 10/11 SE



WARM STREAM is an ISO 9002 Customer Centric Company Committed to deliver Products of International Quality Standards and Provide Excellent after Sales Services.

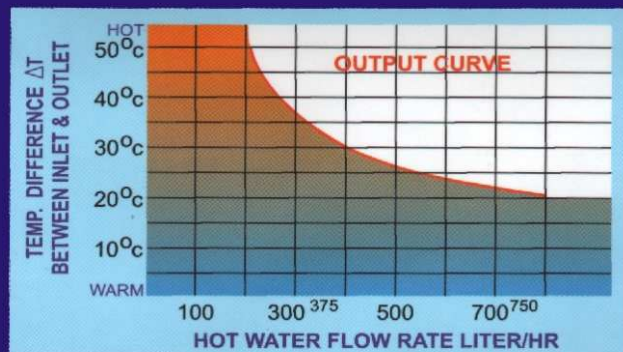
1
year
Guarantee



Type of installation	Int / Ext	External	Int / Ext	Int / Ext	External
MODEL	IG 10/11 SA	IG 10/11 SEA	IG 10 T	IG 10/11 S	IG 10/11 SE
Maximum use full power	17,4 kw	17,4 kw	17,4 kw	17,4 kw	17,4 kw
Maximum nominal consumption	20,9 kw	20,9 kw	20,9 kw	20,9 kw	20,9 kw
Efficiency in terms of PCI	>84%	>84%	>84%	>84%	>84%
Maximum use full power	6.96 kw	6.96 kw	6.96 kw	6.96 kw	6.96 kw
Power adjustment range	40% to 100%	40% to 100%	40% to 100%	40% to 100%	40% to 100%
MINIMUM WATER PRESSURE					
4 ltr./min.(selector closed)	7PSI	7PSI	7PSI	1.5 PSI	1.5 PSI
4 ltr./min.(selector closed)	17 Feet	17 Feet	17 Feet	3.5 Feet	3.5 Feet
10 ltr./min.(selector open)	7 PSI	7 PSI	7 PSI	7 PSI	7 PSI
10 ltr./min.(selector open)	17 Feet	17 Feet	17 Feet	17 Feet	17 Feet
Maximum water pressure	150 PSI	150 PSI	150 PSI	150 PSI	150 PSI
Maximum water pressure	340 Feet	340 Feet	340 Feet	340 Feet	340 Feet
Electric connection (DC) battery	1,5 V	1,5 V	1,5 V	No	No
Chimney connection	110 mm	110 mm	110 mm	110 mm	110 mm
Gas connection	1/2"	1/2"	1/2"	1/2"	1/2"
Chimney connection	1/2"	1/2"	1/2"	1/2"	1/2"
Per cu. mtr. Of Natural Gas	360 letter.	360 letter.	360 letter.	360 letter.	360 letter.
Per 14.2Kgs. Of L.P.G. Bottle	7060 letter .	7060 letter .	7060 letter .	7060 letter .	7060 letter .

- **ENERGY SAVER** As no pilot Flame is required, it saves upto 8% of gas consumption.
- **EASY TO INSTALL** No wires required. Just a 1.5 volt ordinary battery is needed.
- **ADJUSTABLE POWER** With the flow regulator you can adjust hot water temperature and flow from 40% to 100%.
- **VERSATILE RANGE** The range of operating water pressure is between 7 PSI to 150 PSI.
- **NO HASSLE** The entire operation is done with the help of Heat Exchanger with large diameter tube and interior ribbin. No coil is used.
- **COST EFFECTIVE** combustion chamber is thermally insulated to prevent heat loss.
- **SMART & ELEGANT** Its not only smart but also sleek and elegant with attractive powder coating finish.
- **DESIGN & BUILT** Using latest State of Art technology of heat transfer and water heating, with only noble materials. No plastic parts inside.
- **WORKING CURVE** The following curve explains the relation between the flow and output temperature depending on the position of the gas control and flow selector.

At 11 liter per Min (660 lit/hr.) flow, this heater can increase water temperature by 20 deg. Cm, but with 4 lit/min (240 liy/min) flow, thuis hjeater is capable to increase water temperature by 2 deg. C. Turn the control knob and you can have plenty of hot water at right temperature, wherever you want , wherever you want.



Quality Certification
Bureau Inc.



Accredited by
the Dutch Council
for Accreditation



WARM STREAM™
HEAT TRANSFER PEOPLE

ANAND - SOJITRA ROAD, P.O. BOX - 22
VITHAL UDYOGNAGAR
GUJARAT - 388 121, INDIA.
Phone : (02692) 231316, 232309 Fax : 236478
web site : www.warmstream.net
E-mail : warmstream@warmstream.co.in